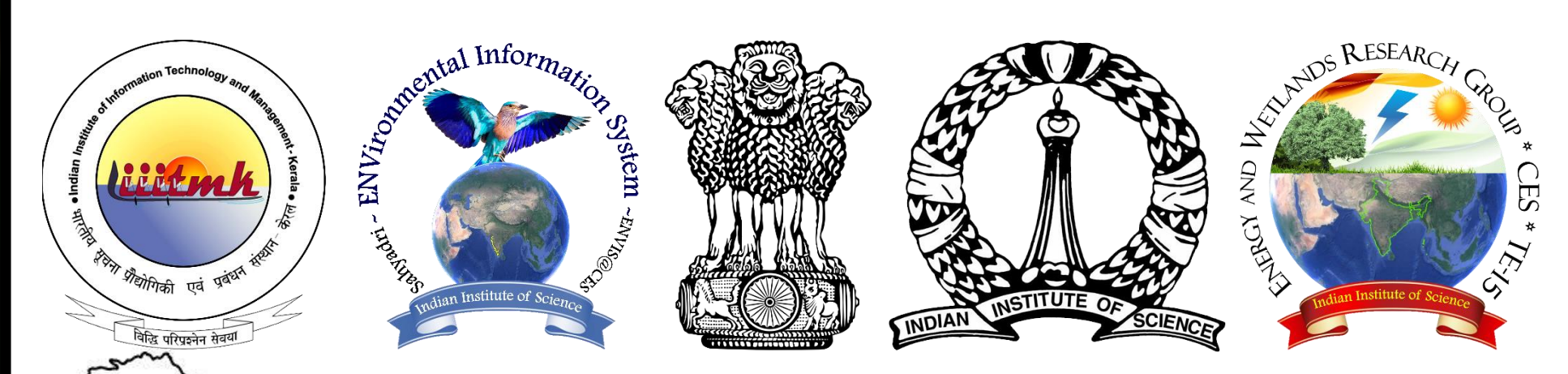
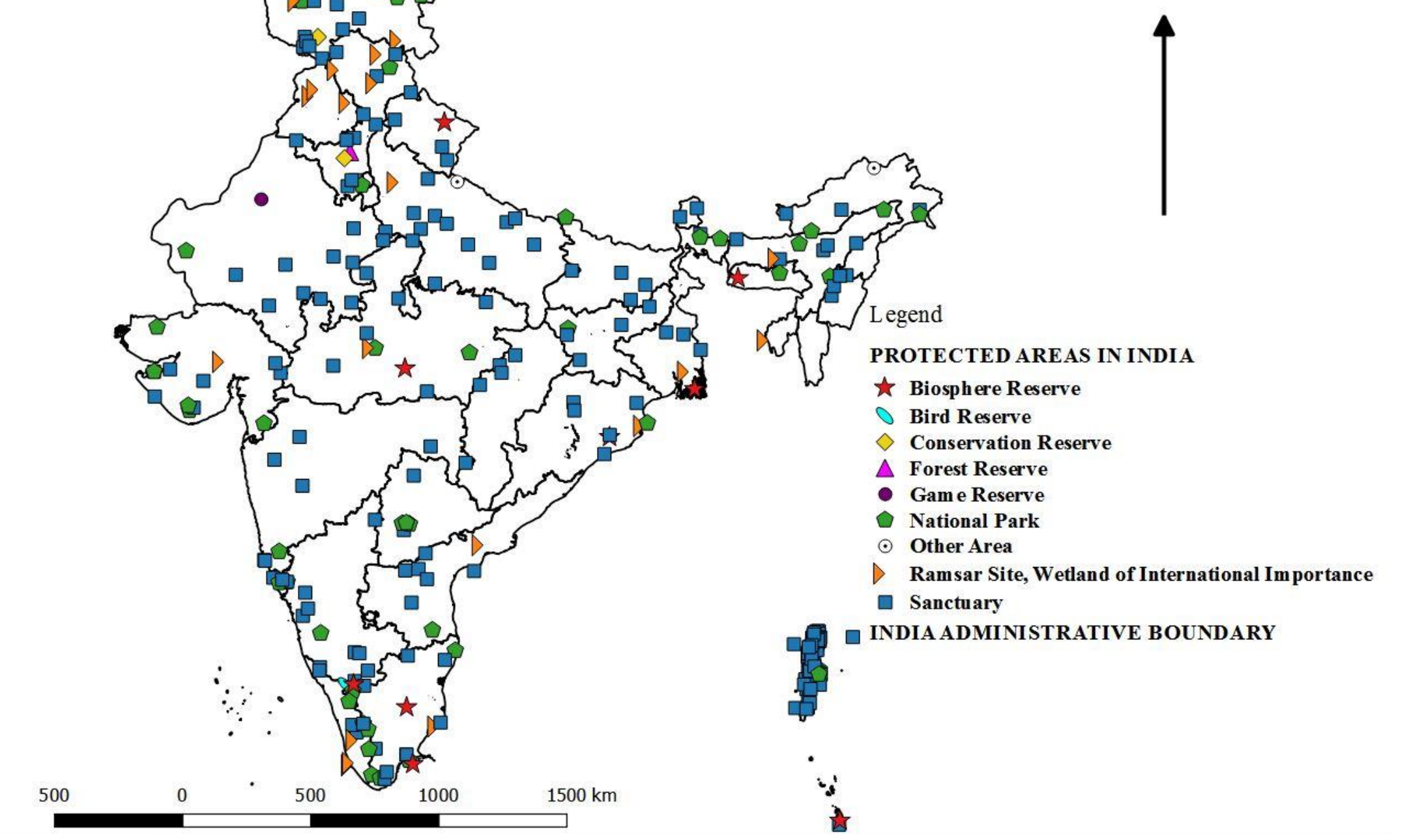


# ECOLOGICAL SIGNIFICANCE OF PROTECTED AREAS IN KERALA REGIONS OF WESTERN GHATS



PROTECTED AREAS IN INDIA



## PROTECTED AREAS

Conservation areas helps to arrest further degradation of native vegetation and thereby protect biodiversity. There are 733 PAs including 103 National Parks, 537 Wildlife Sanctuaries, 67 Conservation Reserves and 26 Community Reserves in India.

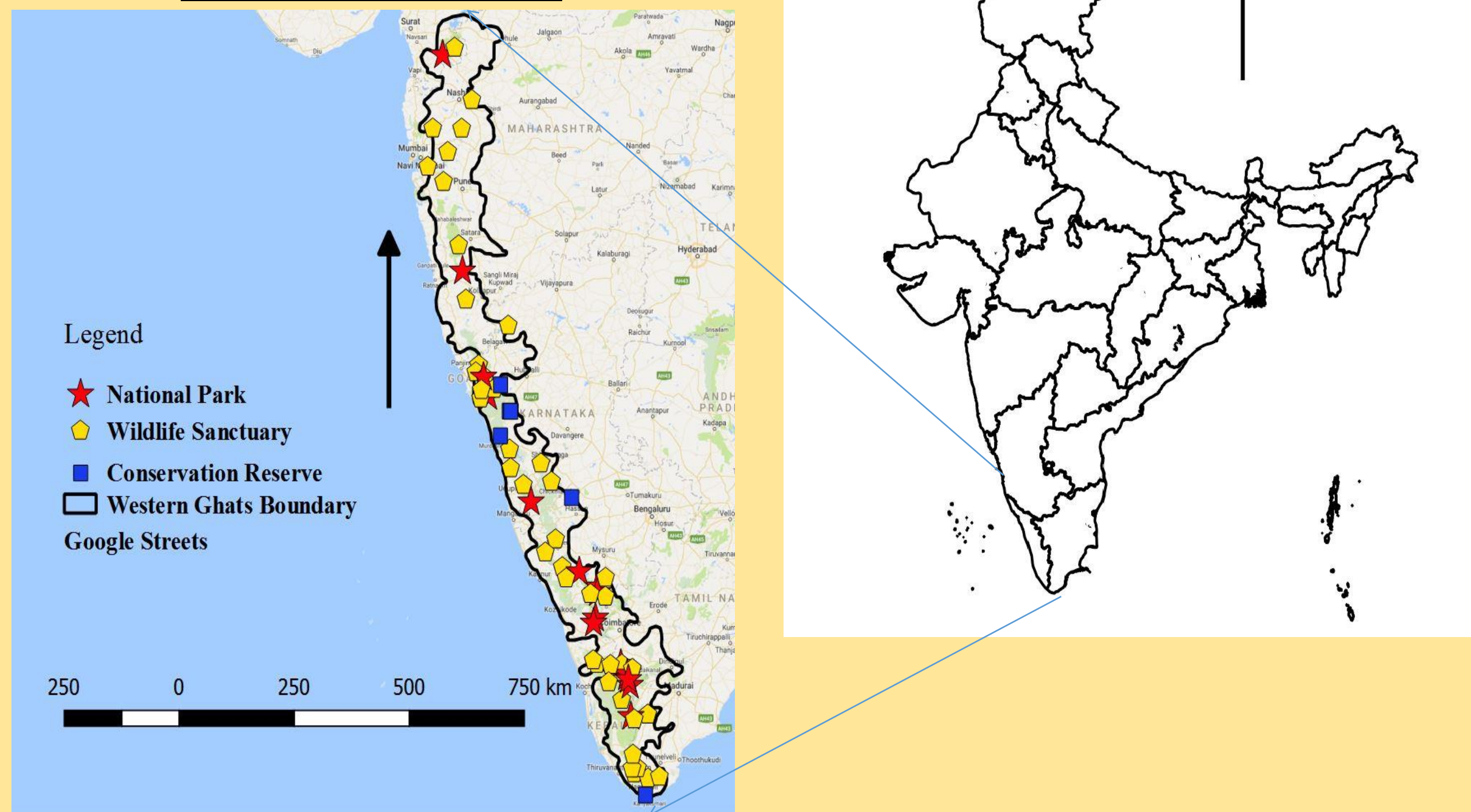
## Protected Areas in Western Ghats

- ❖ 15 National Park
- ❖ 47 Wild Life Sanctuary
- ❖ 6 Conservation Reserve
- ❖ 2 Biosphere Reserve

## Western Ghats

One of the 35 biodiversity hotspots covering an area of 1,64,280 sq. km and spreads through 6 states – Kerala, Tamil Nadu, Goa, Karnataka, Maharashtra & Gujarat.

## STUDY AREA



## SPECIES DIVERSITY IN PROTECTED AREAS OF KERALA

Protected areas in the Kerala region has higher species diversity and maximum number of threatened species.

- ❖ Fauna: 2261
- ❖ Flora: 3867
- ❖ Percentage Endemism: 23.89%
- ❖ Threatened Species: 4.81%

## NATIONAL PARK WITH HIGH BIODIVERSITY

Silent Valley National Park is the largest National park in Kerala with high number of fauna (610 sp). Among that 413 species are endemic and 66 threatened species were also reported from Silent Valley NP

Sl.No.	Protected Area	No. of Fauna	No. of Flora
KERALA			
1.	Anamudi Shola National Park	59	68
2.	Eravikulam National Park	414	493
3.	Mathikethan National Park	43	80
4.	Pampadum National Park	317	115
5.	Silent Valley National Park	610	652
6.	Parambikulam Tiger Reserve	436	169
7.	Periyar Tiger Reserve	709	1961
8.	Aralam Wildlife Sanctuary	81	194
9.	Chimmony Wildlife Sanctuary	33	268
10.	Chinnar Wildlife Sanctuary	488	962
11.	Chulanoor Wildlife Sanctuary	25	30
12.	Idukki Wildlife Sanctuary	369	433
13.	Kottiyoor Pea Fowl Sanctuary	5	1
14.	Kurinjalama Wildlife Sanctuary	289	114
15.	Malabar Wildlife Sanctuary	160	181
16.	Neyyar Wildlife Sanctuary	388	206
17.	Peechi Wildlife Sanctuary	569	125
18.	Peppara Wildlife Sanctuary	243	433
19.	Shendurney Wildlife Sanctuary	146	932
20.	Thattekkad Bird Sanctuary	691	728
21.	Wayanad Wildlife Sanctuary	462	241

## CONSERVATION

- Restrict activities or plans that lead to deforestation.
- Rehabilitate human settlement in core area to buffer and transition zone.
- Strict rules against hunting and poaching.
- Restrict further monoculture plantation and developmental activities and restore degraded forest patches with native plants.
- Make forest officials accountable for forest encroachments and fragmentation
- Implement forest conservation activities with the help of local communities
- Awareness programmes to bring awareness about effects of deforestation like floods, water scarcity
- Reduce human-animal conflict by constructing suitable animal corridor, restricting vehicles in road through protected areas etc.
- Regular check of animal through methods like camera trap.

